



GMT MONTHLY MEMBERSHIP PROGRESS REPORT

Results as of: 9/30/2019

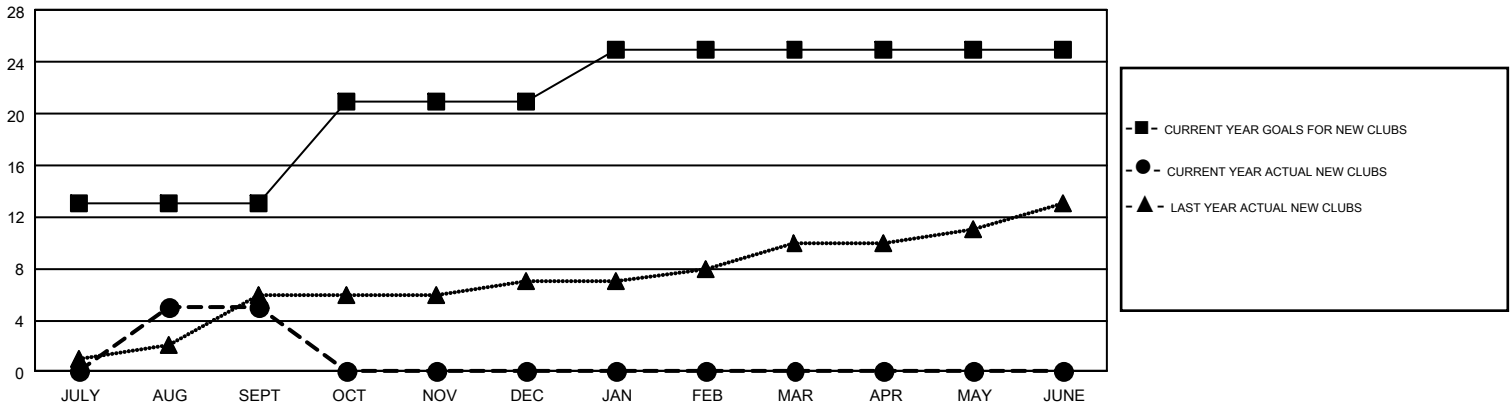
GMT Constitutional Area 5 - K, Group L

GMT: OPEN

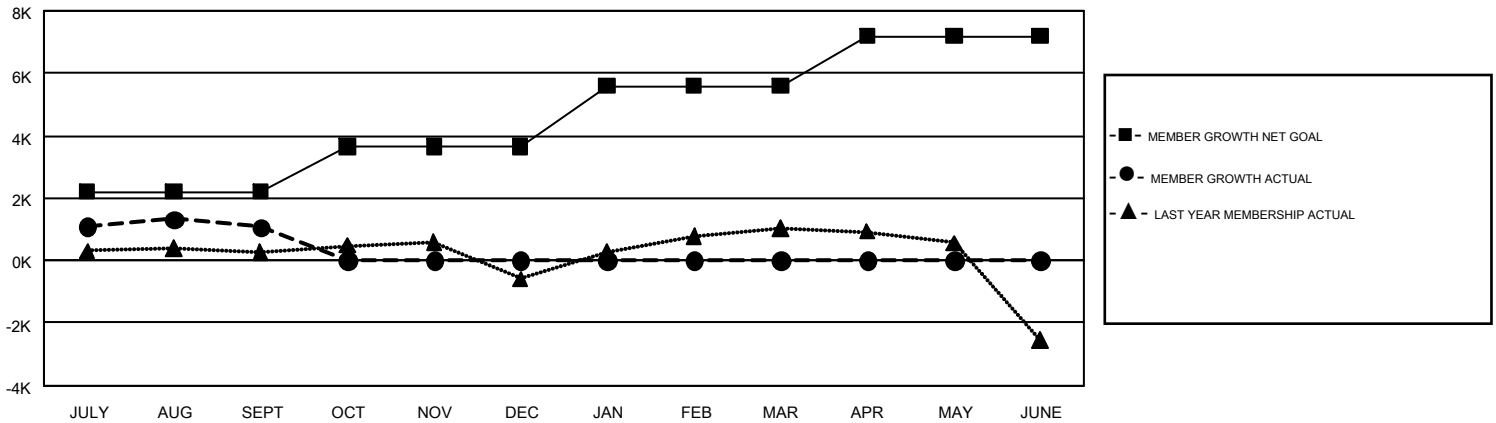
REPORT DOES NOT INCLUDE CLUBS IN UNDISTRICTED AREAS.

Clubs				Members			
RESULTS FOR 2019-2020				RESULTS FOR 2019-2020			
QUARTER	NEW CLUB GOAL	NEW CLUBS	DROPPED CLUBS	QUARTER	MEMBER GROWTH NET GOAL	MEMBER GROWTH ACTUAL	DROPPED MEMBERS ACTUAL (including transfers)
JULY/AUG/SEPT	13	5	3	JULY/AUG/SEPT	2210	2,781	1,620
OCT/NOV/DEC	8	0	0	OCT/NOV/DEC	1450	0	0
JAN/FEB/MAR	4	0	0	JAN/FEB/MAR	1940	0	0
APR/MAY/JUNE	0	0	0	APR/MAY/JUNE	1590	0	0

GOALS AND ACTUAL NEW CLUBS CUMULATIVE



GOALS AND ACTUAL MEMBERS CUMULATIVE



DROPPED CLUBS: 3	603 CLUBS OF 1,057 ADDED 1 OR MORE NEW MEMBERS	<u>GENDER DISTRIBUTION</u>	
<u>DROPPED MEMBERS</u>		MALE	35,852 (71.89%)
DECEASED	15	FEMALE	14,021 (28.11%)
CLUB CANCELLED	0	TOTAL FAMILY UNIT MEMBERS	
OTHER	1,605	5,915	
TOTAL	1,620	FAMILY MEMBERS PAYING HALF DUES	
		3,571	

[CLICK HERE FOR CUMULATIVE MEMBERSHIP DATA](#)